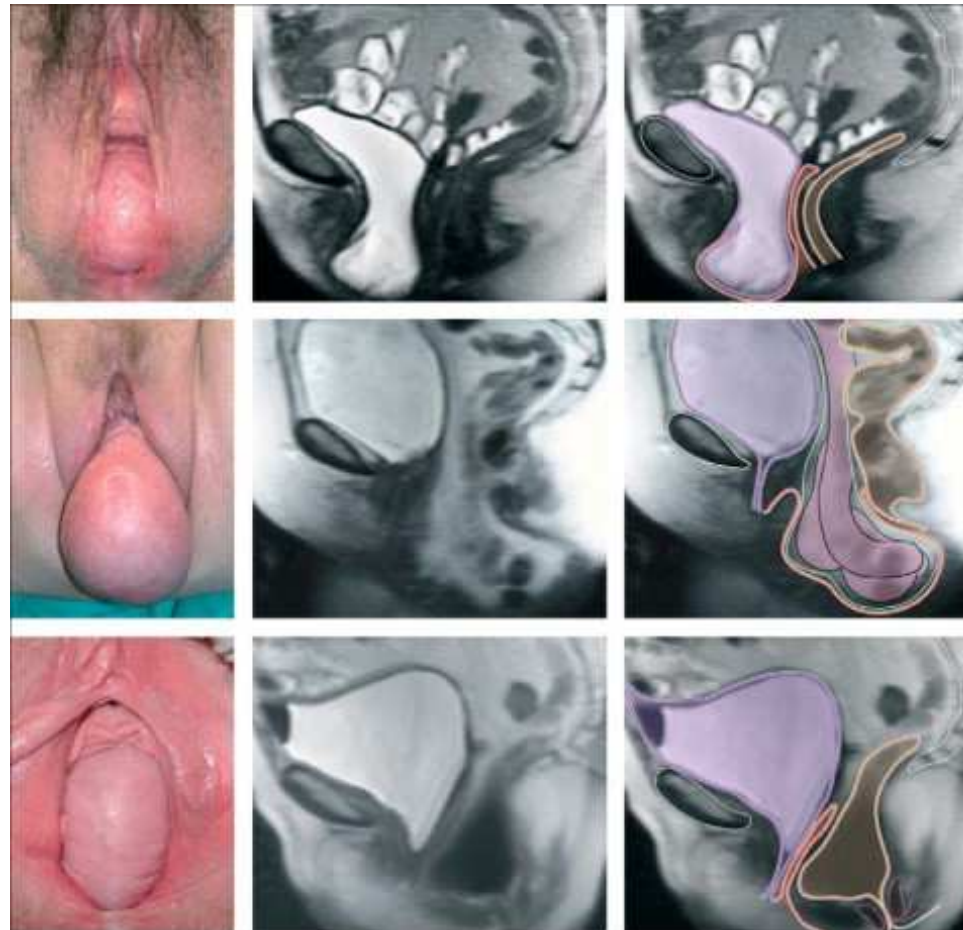
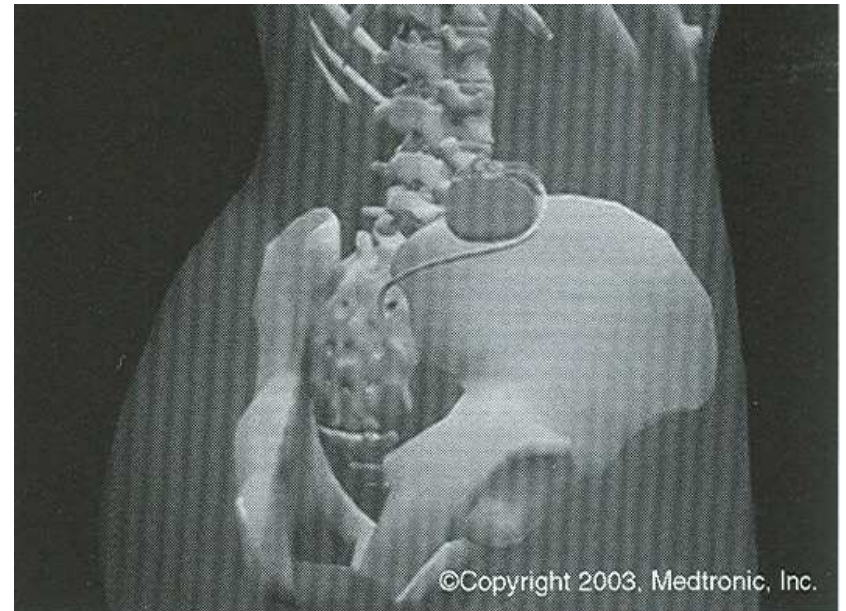
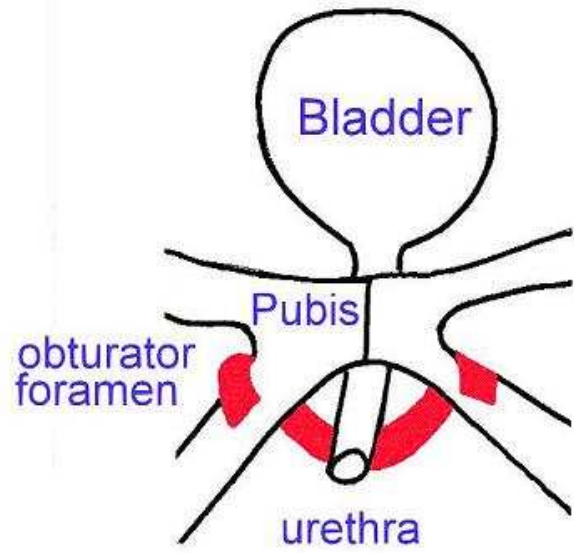
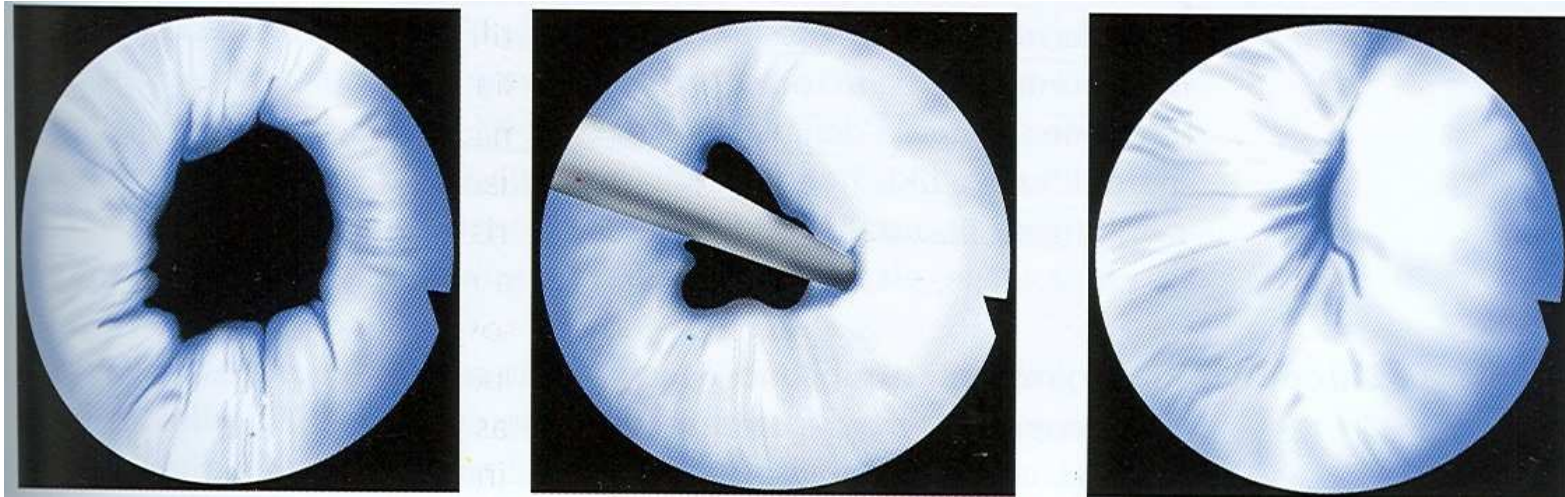


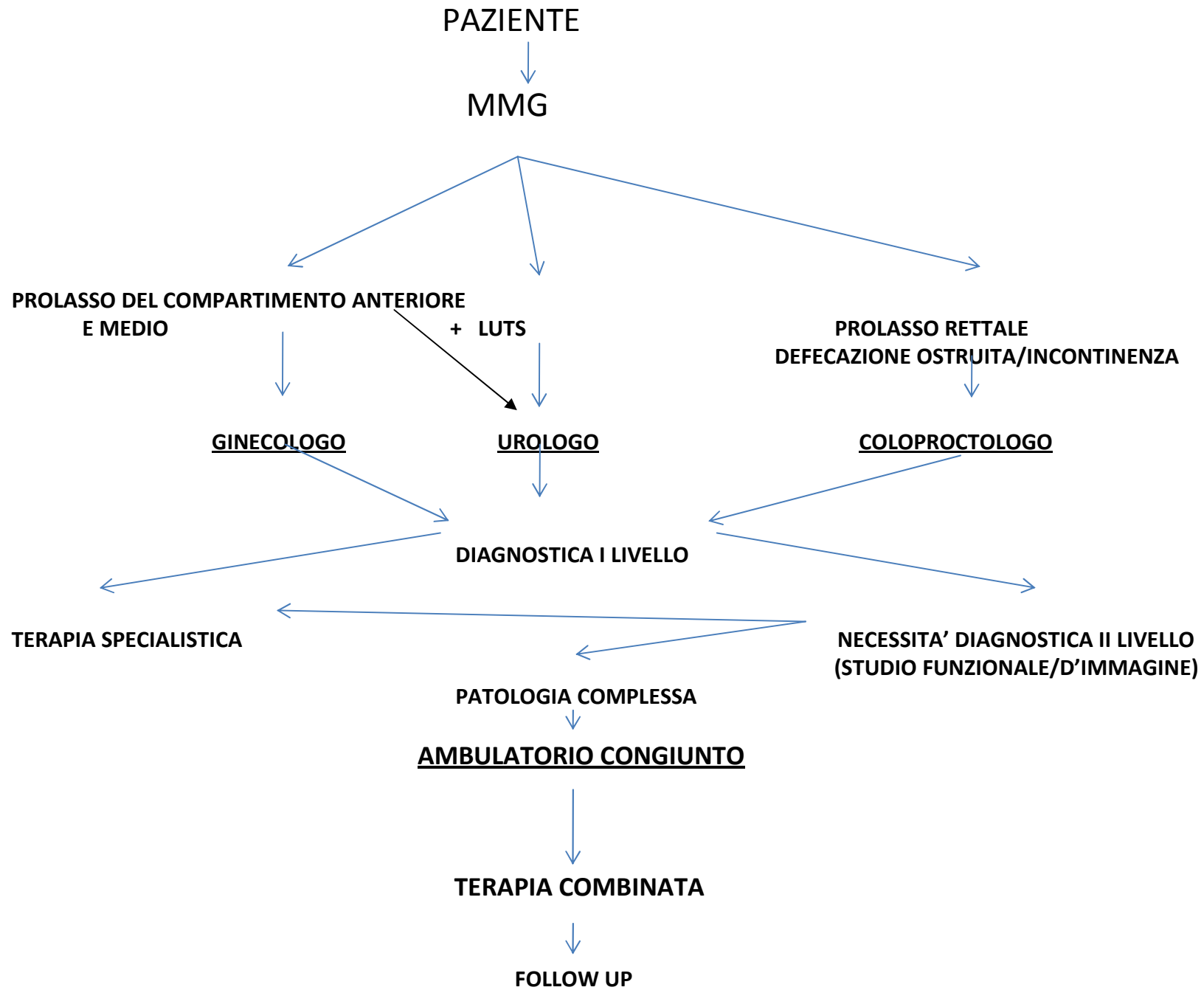
“There is an increasing enthusiasm for viewing the pelvic floor from a global perspective, discounting the traditional segregation into anterior, middle and posterior compartments” Kenton K.
The global burden of female pelvic floor disorders. BJU International 2006.





The Food and Drug Administration on June 16, 2011 published a Public Health Notification about complications of surgical mesh used for pelvic organ prolapse and stress urinary incontinence





Prevalenza dei disordini sintomatici del pavimento pelvico 15.7%