

endoscopica e percutanea della litiasi



TRATTAMENTO DELLA LITIASI URINARIA



Il trattamento della litiasi urinaria è essenzialmente endoscopico, percutaneo o extracorporeo. La litotripsi extracorporea viene riservata solo in caso di indicazioni specifiche o nel trattamento di alcune complicanze.

URETEROSCOPIA

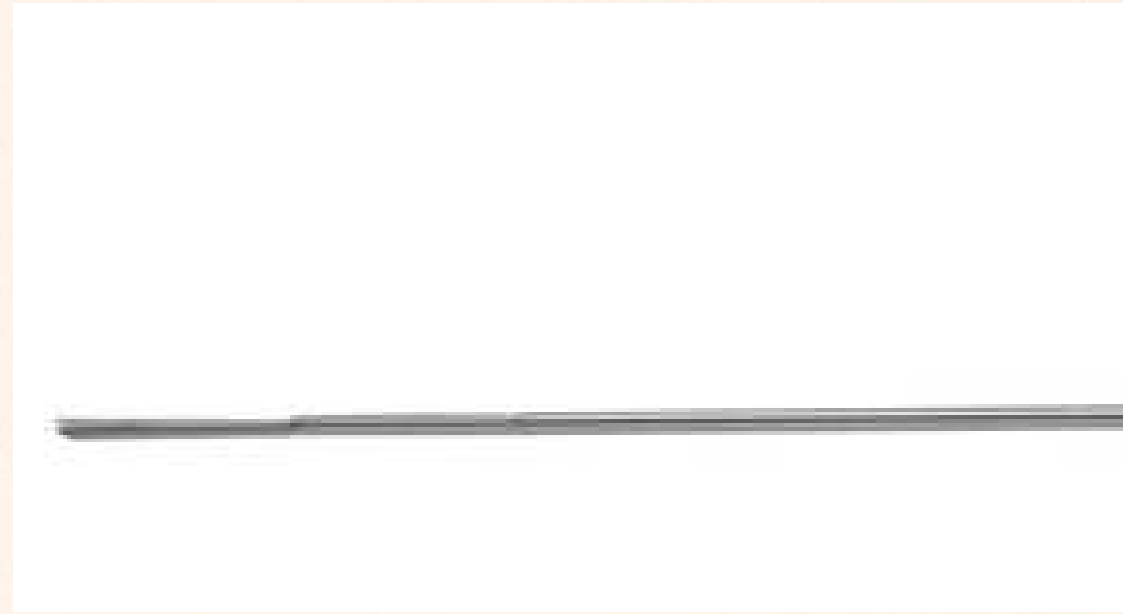


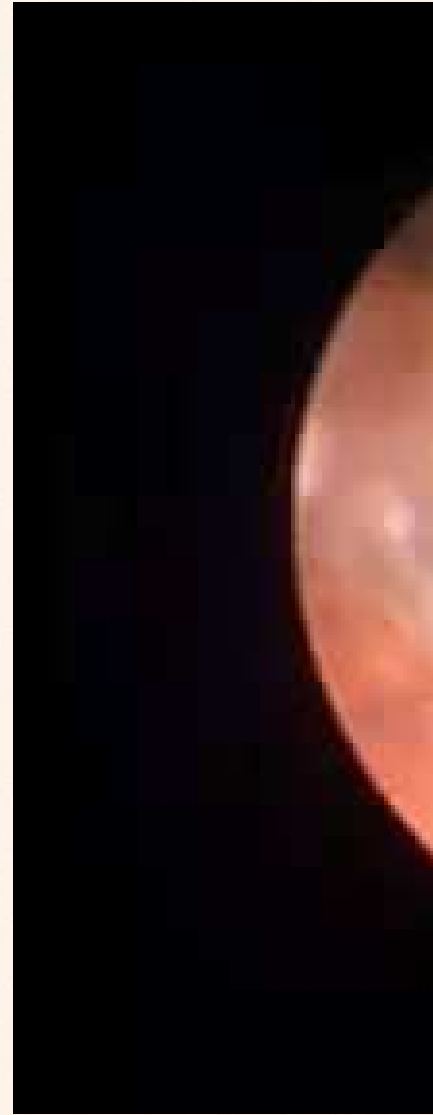
recidivanti

lungata nel tempo

a per litiasi
bare e

semirigido di
7

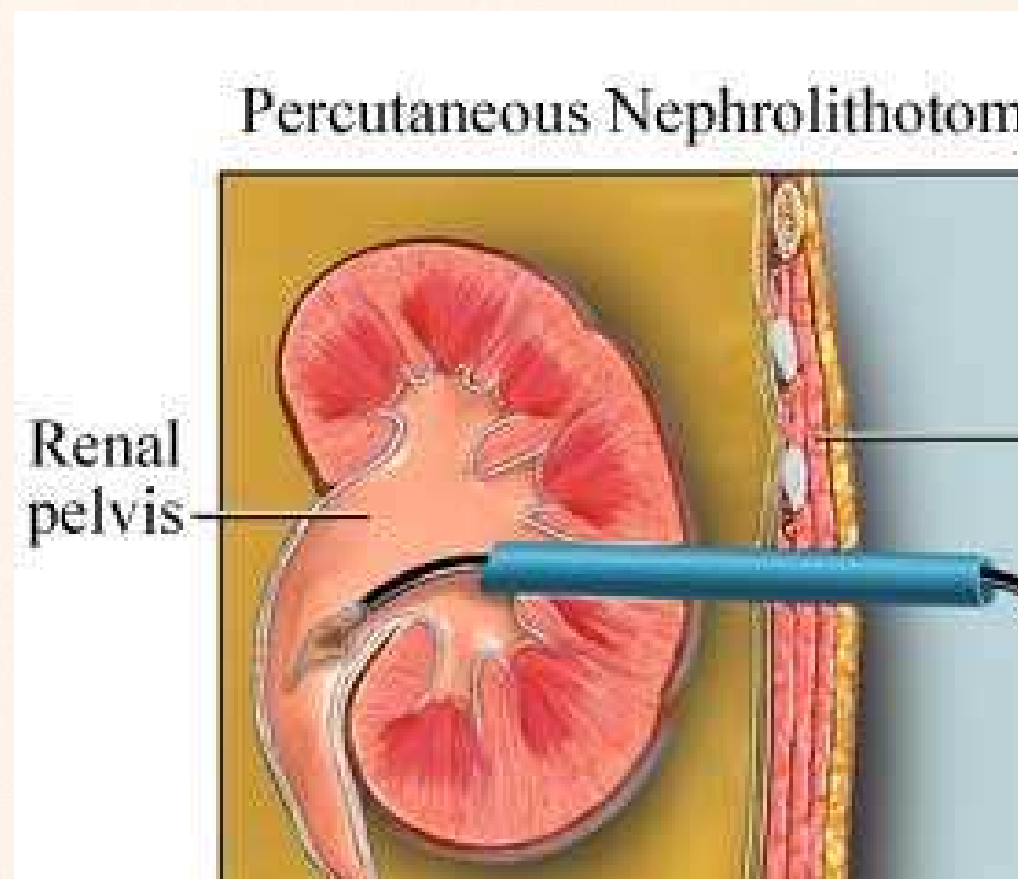




The removal of ureteral stones is an alternative when SWL is not indicated. The upper urinary tract is not amenable to retrograde URS.

accesso alla pelvi renale

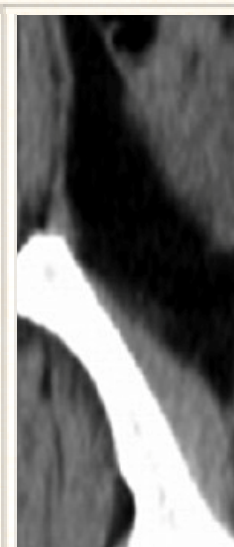
endoscopio flessibile



calcolo

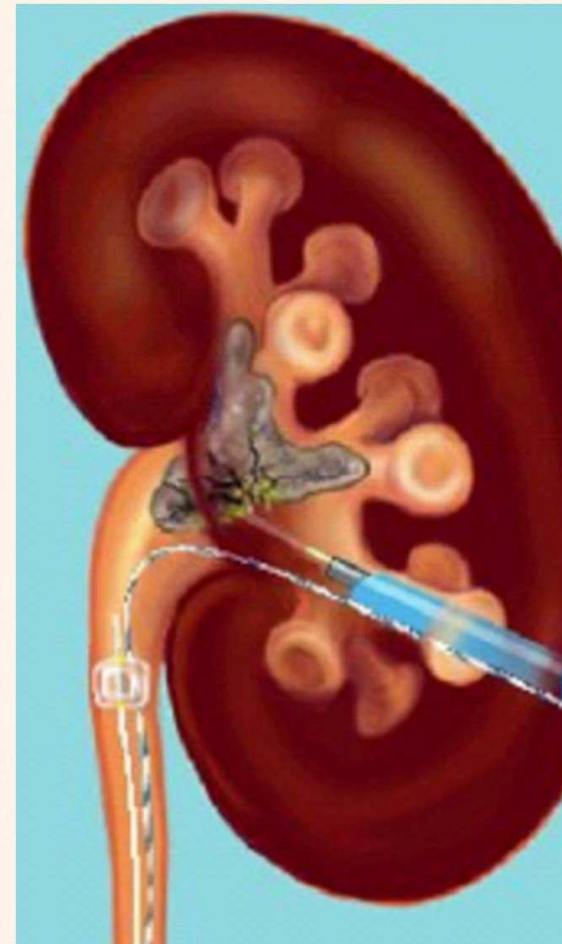
e

eterale



cutanea (PCNL o

ale retrograda

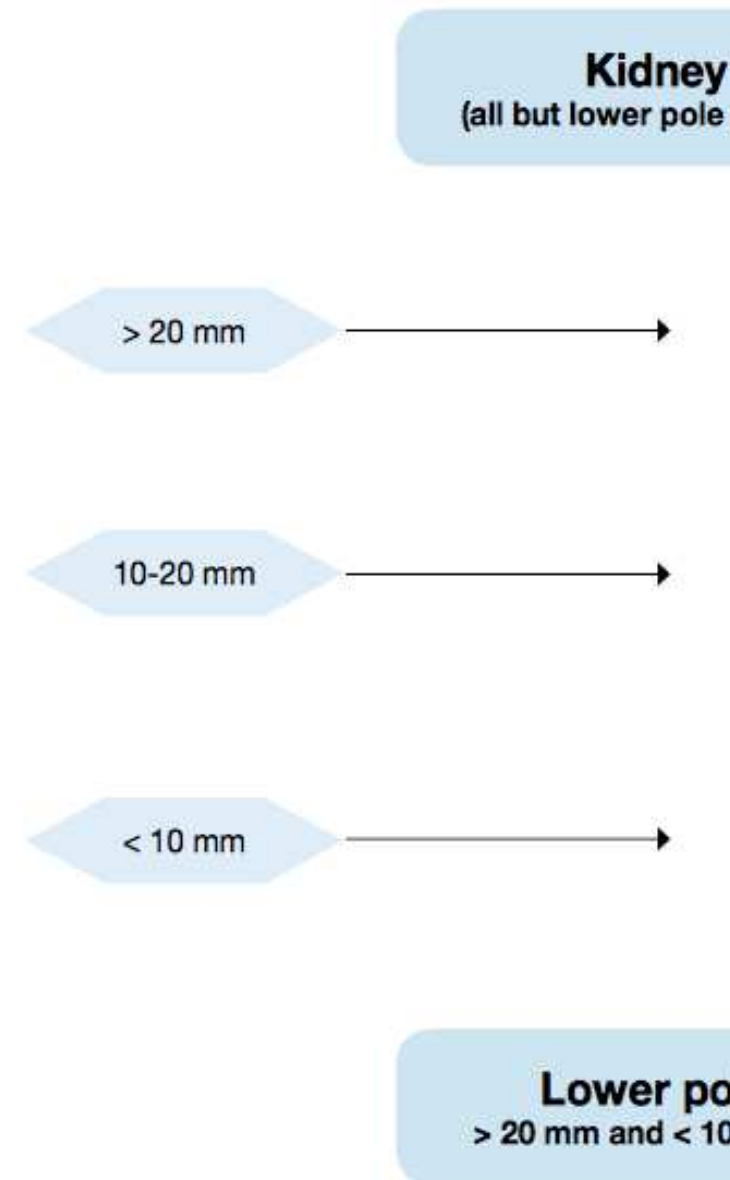


PERCUTANEA



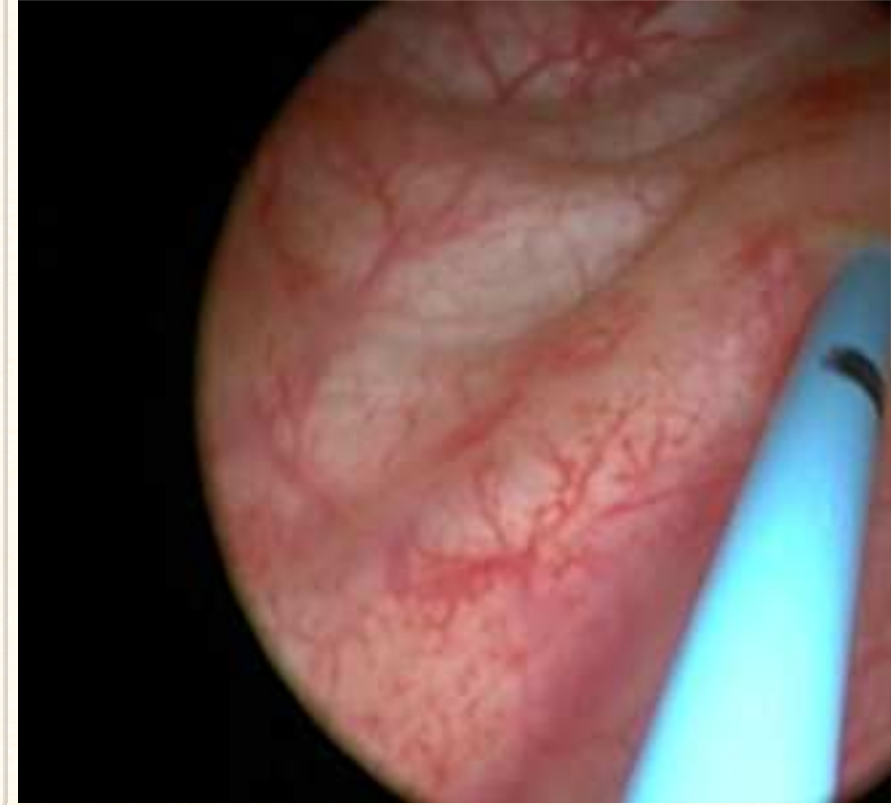
calici superiore e
i
r il calice inferiore

Figure 6.1: Treatment algorithm for renal calculi



CNL

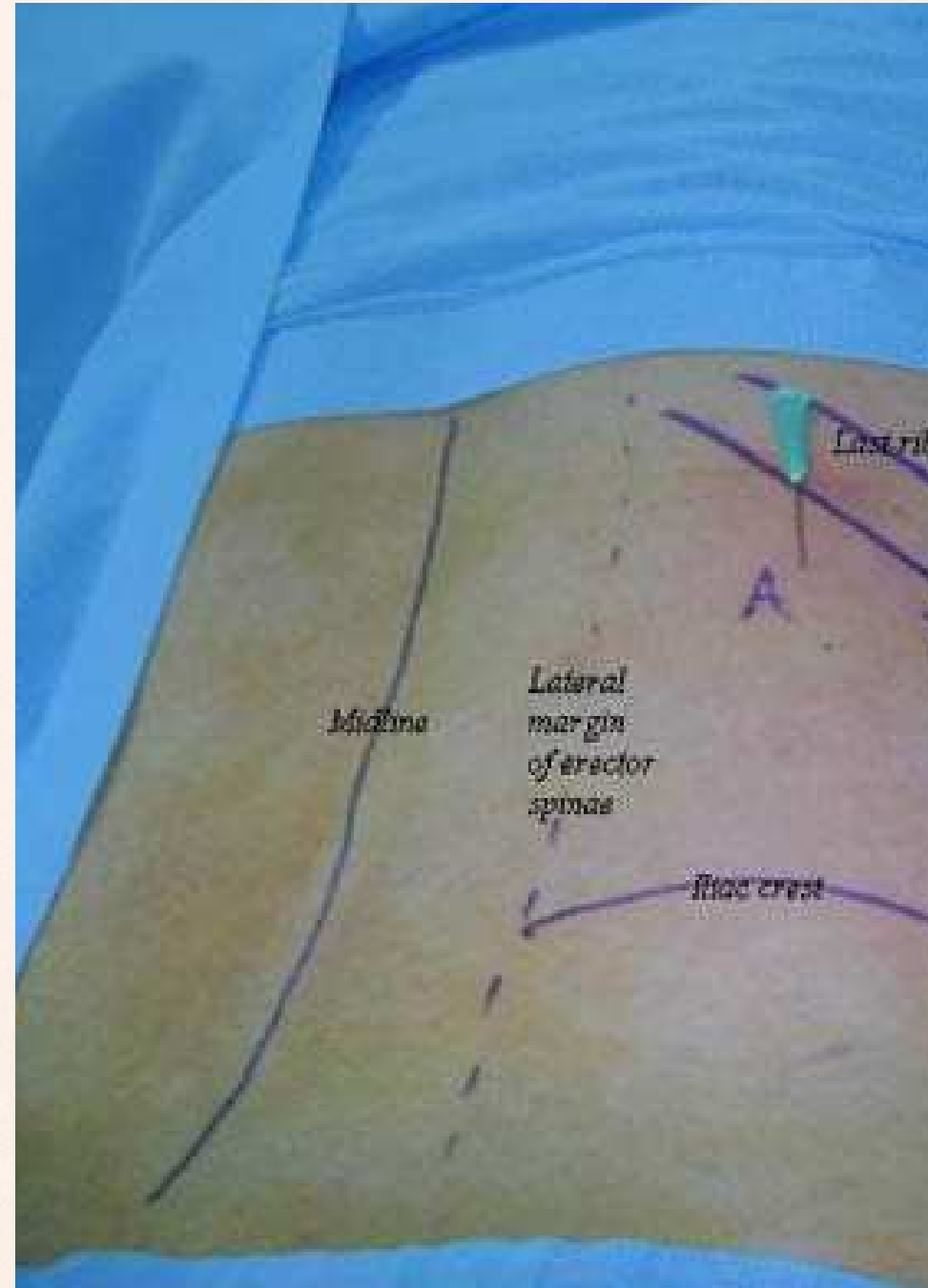
to di un catetere
via retrograda
cizzazione delle
co-pieliche.





CNL

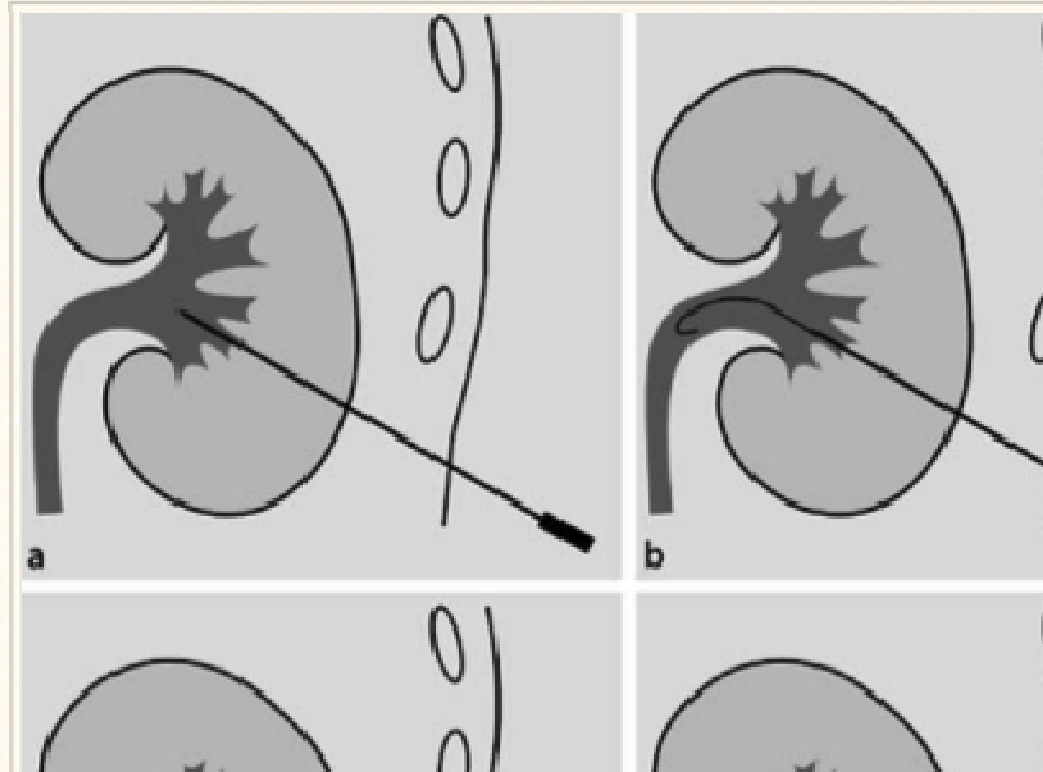
ne posteriormente
lare posteriore a
roiezione cutanea
o deve avvenire
renchima renale



CNL



o al calice



CNL

e del tramite

assiali di Alken



CNL

e del tramite

ne idraulica



calcolo

menti maggiori con



La litotrissia ad ultrasuoni
frammentazione e aspirazione

CNL

procedura viene
sede il catetere
4h e solitamente
a una nefrostomia
ssa dopo 2-3 gg



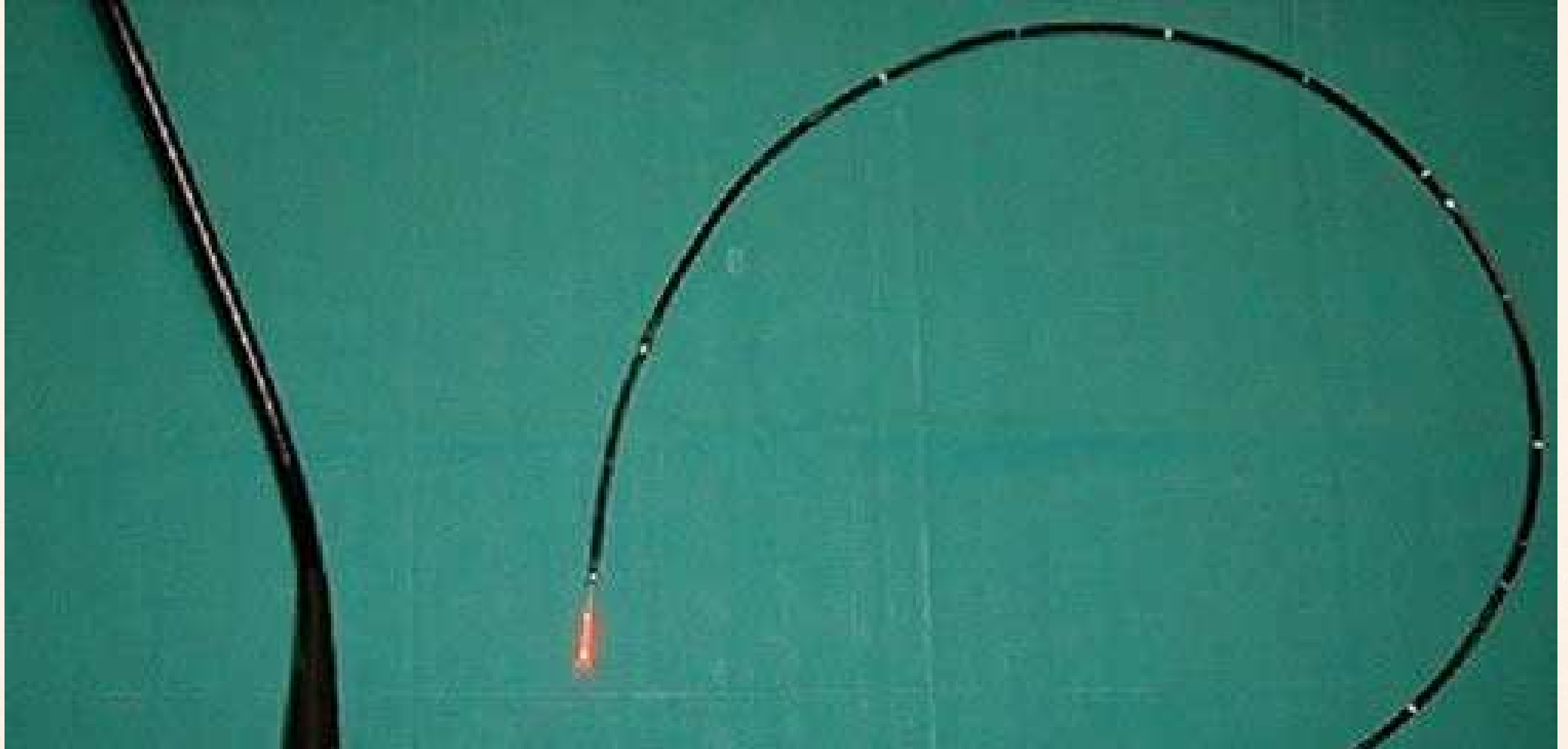
r accessi ai calici

vi

n

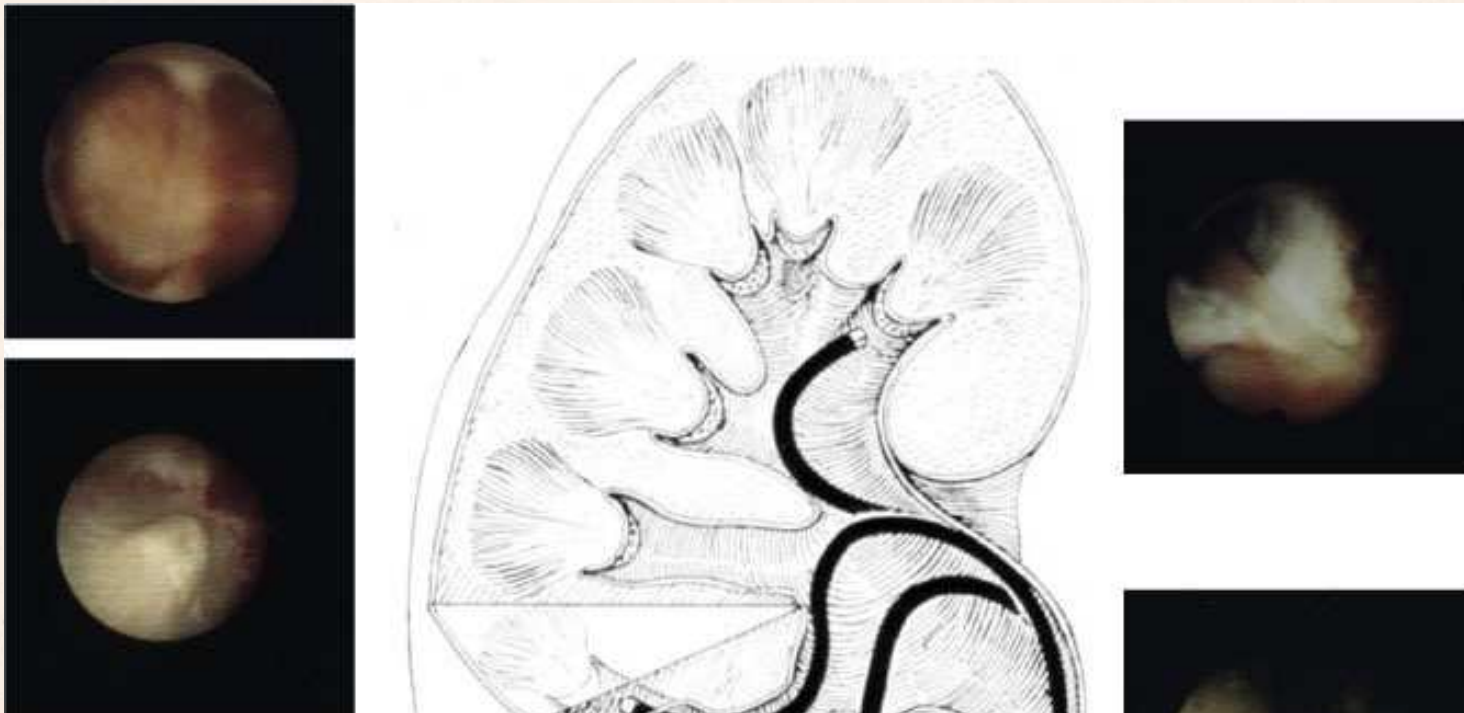


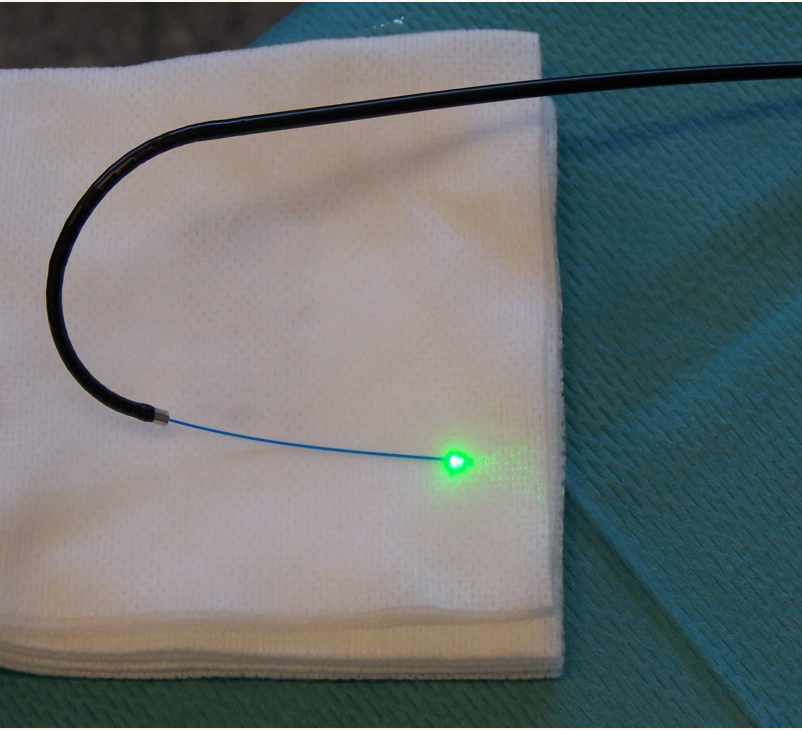
UPGRADE IN TRANS SURGERY (RIRS)



RIRS

si calicopieliche non risolte con trattamenti
a voluminose per essere candidate al t
percutaneo.





vi renale

UZIONONE DELLE AL ARIE ASSOCIATA



UZIIONE DELLE AL ARIE ASSOCIATA

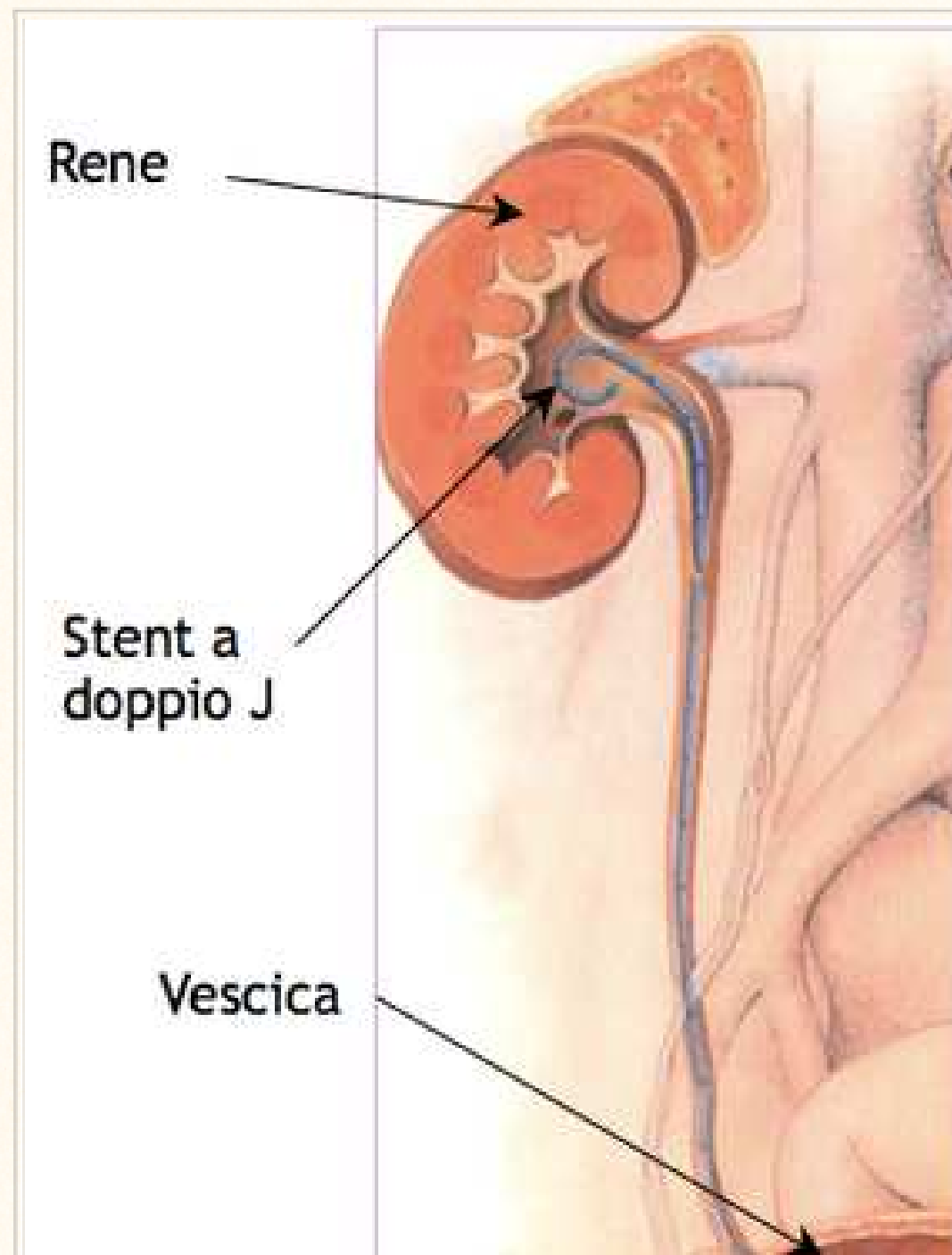
ey with all signs of urinary tract infection (UTI) is a urological emergency
ten necessary to prevent further complications in infected hydrone
teral or bilateral renal obstruction.

UZIIONE DELLE AL ARIE ASSOCIATA

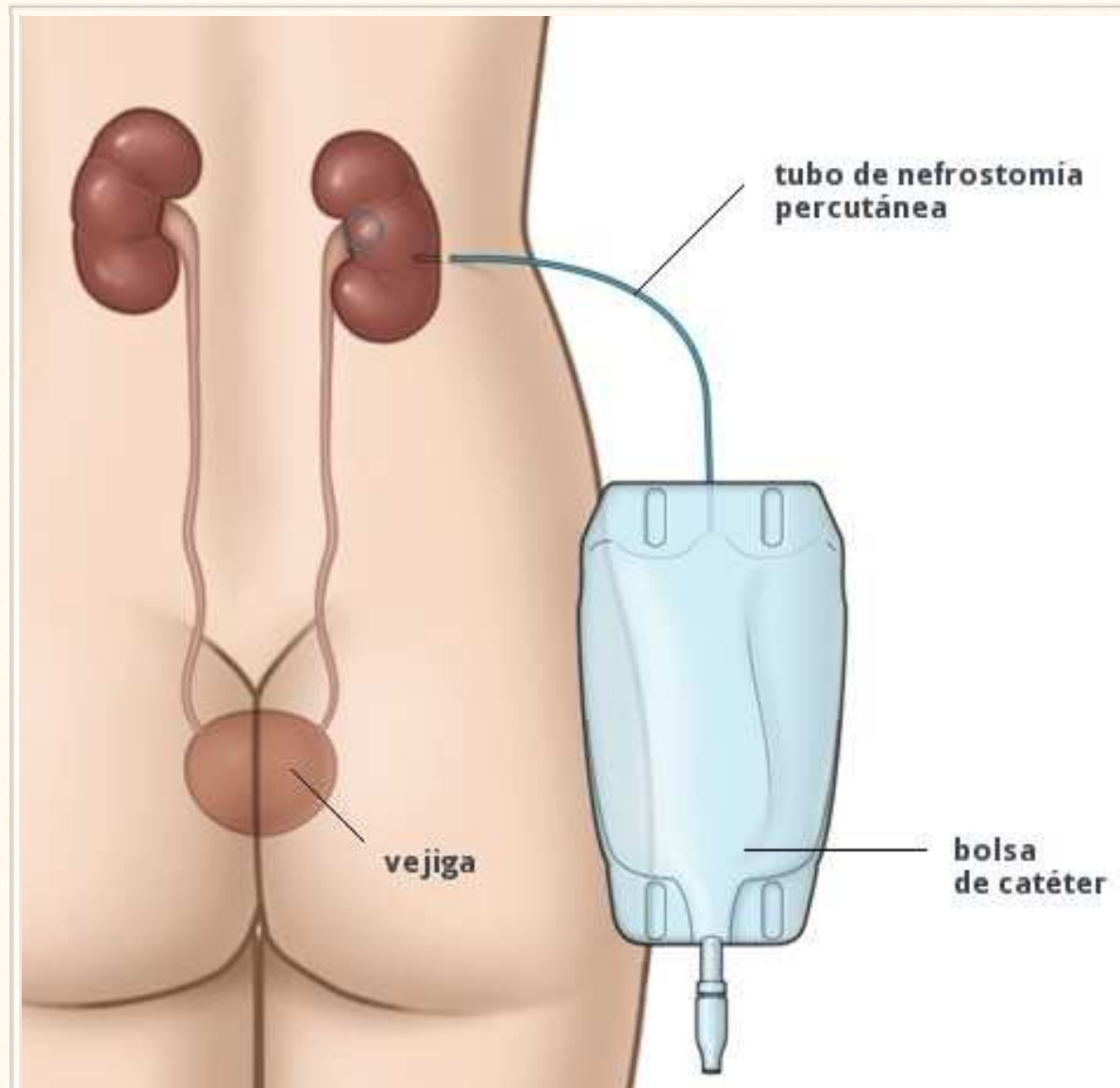


o della via urinaria ostruita è nec
corretta distribuzione dell'antibio

Stentto di uno rene doppio J



nto di una
percutanea



Esistono evidenze che
superiorità di una delle
niche sull'altra

UZIIONE DELLE AL ARIE ASSOCIATA

ctions should always be treated if stone removal is planned. In patie
ion and obstruction, drainage should be performed for several days,
ephrostomy, before starting stone removal.

